

1Trig 4Cyl 5V Hall

Harness Required: E03 Ver 1.0 & E12 Ver 1.0

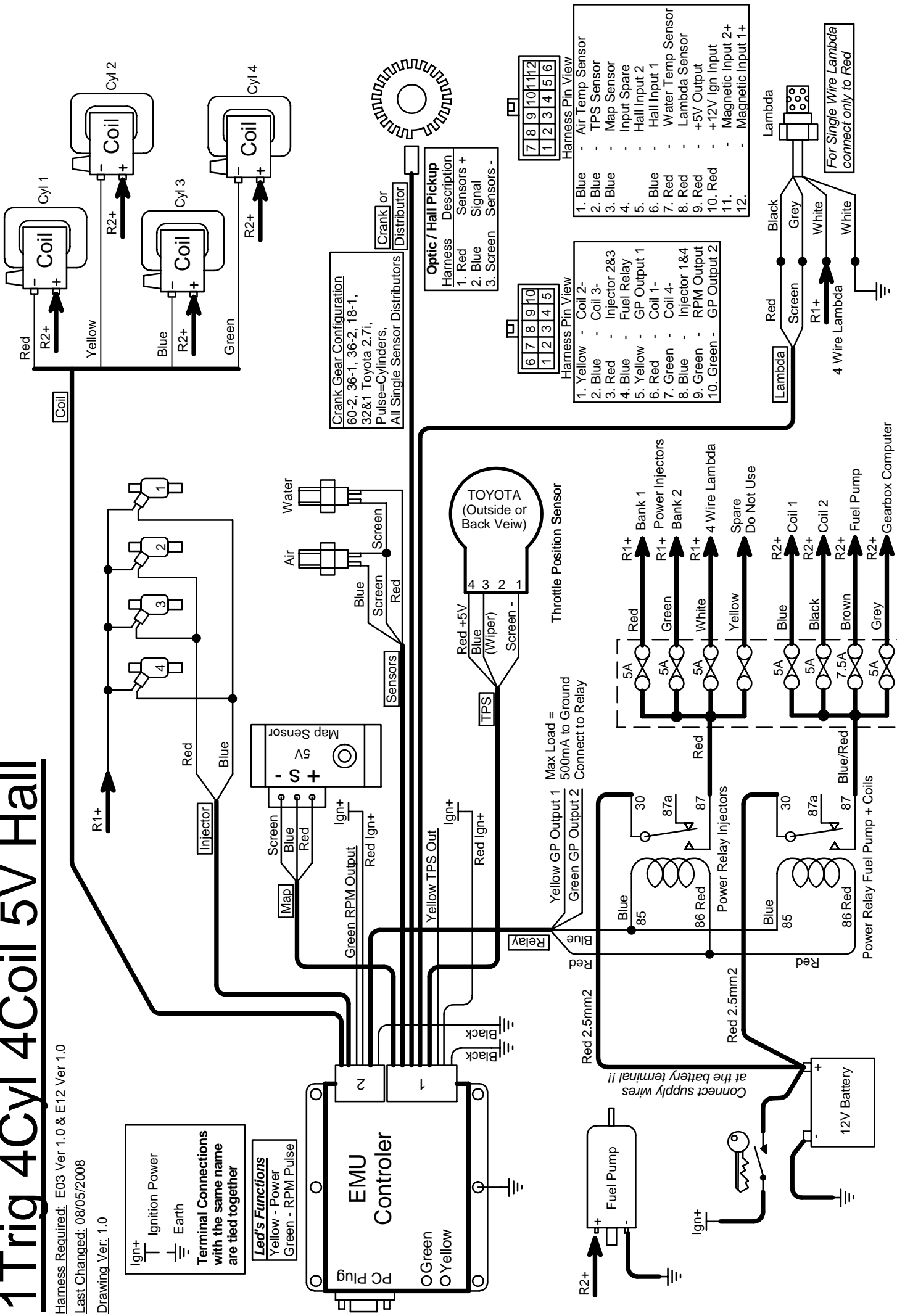
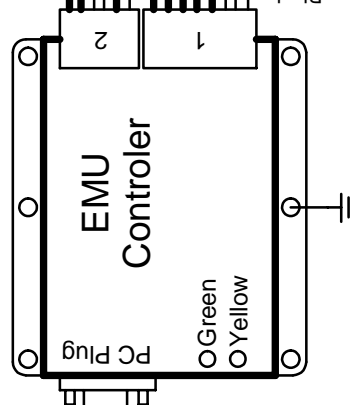
Last Changed: 08/05/2008

Drawing Ver: 1.0

Ign+ Ignition Power
Earth

Terminal Connections with the same name are tied together

Led's Functions
Yellow - Power
Green - RPM Pulse



Crank Gear Configuration
60-2, 36-1, 36-2, 18-1,
32&1 Toyota 2.7i,
Pulse=Cylinders,
All Single Sensor Distributors

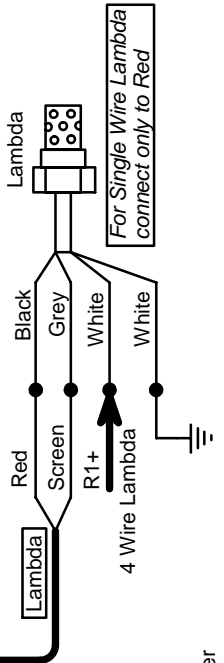
Optic / Hall Pickup
Harness Description
1. Red Sensors +
2. Blue Signal
3. Screen Sensors -



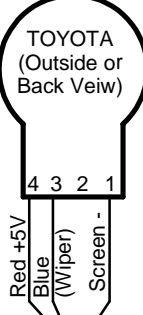
- 1. Yellow - Coil 2-
- 2. Blue - Coil 3-
- 3. Red - Injector 2&3
- 4. Blue - Fuel Relay
- 5. Yellow - GP Output 1
- 6. Red - Coil 1-
- 7. Green - Injector 1&4
- 8. Blue - RPM Output
- 9. Green - GP Output 2
- 10. Green - GP Output 2



- 1. Blue - Air Temp Sensor
- 2. Blue - TPS Sensor
- 3. Blue - Map Sensor
- 4. - Input Spare
- 5. - Hall Input 1
- 6. Blue - Water Temp Sensor
- 7. Red - Lambda Sensor
- 8. Red - +5V Ign Input
- 9. Red - +12V Ign Input
- 10. Red - Magnetic Input 2+
- 11. - Magnetic Input 1+
- 12. -



Throttle Position Sensor
TOYOTA (Outside or Back View)



Max Load = 500mA to Ground
Connect to Relay

