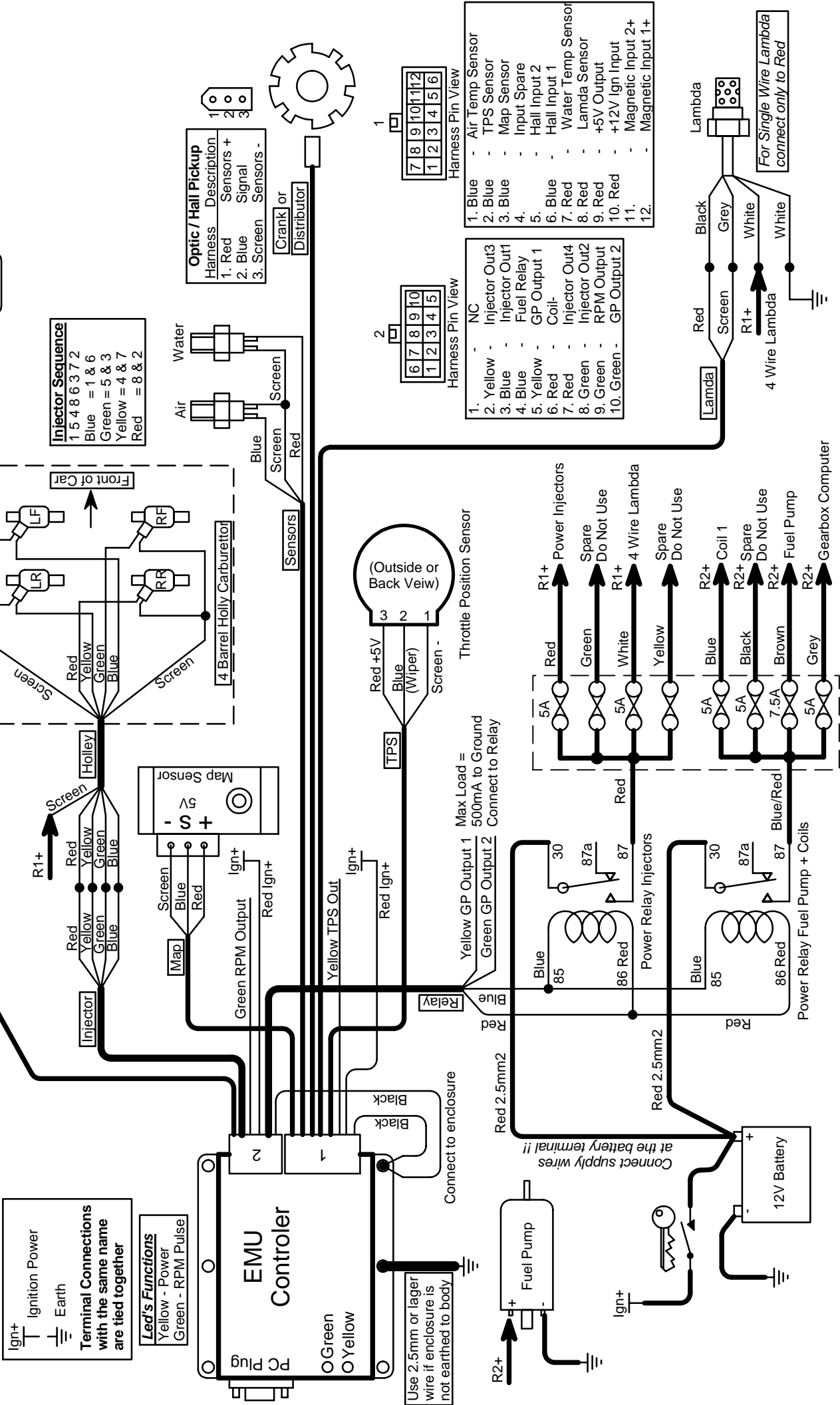


Holley 302 Windsor 5V Hall

Harness Required: E03 Ver 1.0 & E02 Ver 1.1

Last Changed: 26/05/2008

Drawing Ver: 1.0



Ignition Power
 Ign+
 Earth

Terminal Connections with the same name are tied together

Led's Functions
 Yellow - Power
 Green - RPM Pulse

Use 2.5mm or larger wire if enclosure is not earthed to body

Injector Sequence

1	5	4	8	6	3	7	2
Blue	=	1 & 6					
Green	=	5 & 3					
Yellow	=	4 & 7					
Red	=	8 & 2					

Optic / Hall Pickup

Harness	Description
1. Red	Sensors +
2. Blue	Signal
3. Screen	Sensors -

Harness Pin View 2

6	7	8	9	10
1	2	3	4	5

Harness Pin View 1

7	8	9	10	11	12
1	2	3	4	5	6

Harness Pin View

1.	NC
2.	Yellow - Injector Out3
3.	Blue - Injector Out1
4.	Blue - Fuel Relay
5.	Yellow - GP Output 1
6.	Red - Coil-
7.	Red - Injector Out4
8.	Green - Injector Out2
9.	Green - RPM Output
10.	Green - GP Output 2

Harness Pin View

1.	Blue	-	Air Temp Sensor
2.	Blue	-	TPS Sensor
3.	Blue	-	Map Sensor
4.	-	-	Input Spare
5.	-	-	Hall Input 2
6.	Blue	-	Hall Input 1
7.	Red	-	Water Temp Sensor
8.	Red	-	Lambda Sensor
9.	Red	-	+5V Output
10.	Red	-	+12V Ign Input
11.	-	-	Magnetic Input 2+
12.	-	-	Magnetic Input 1+

