

Toyota 4Cyl 4Coil 12V Mag

Harness Required: E15 Ver 1.0 & E12 Ver 1.0

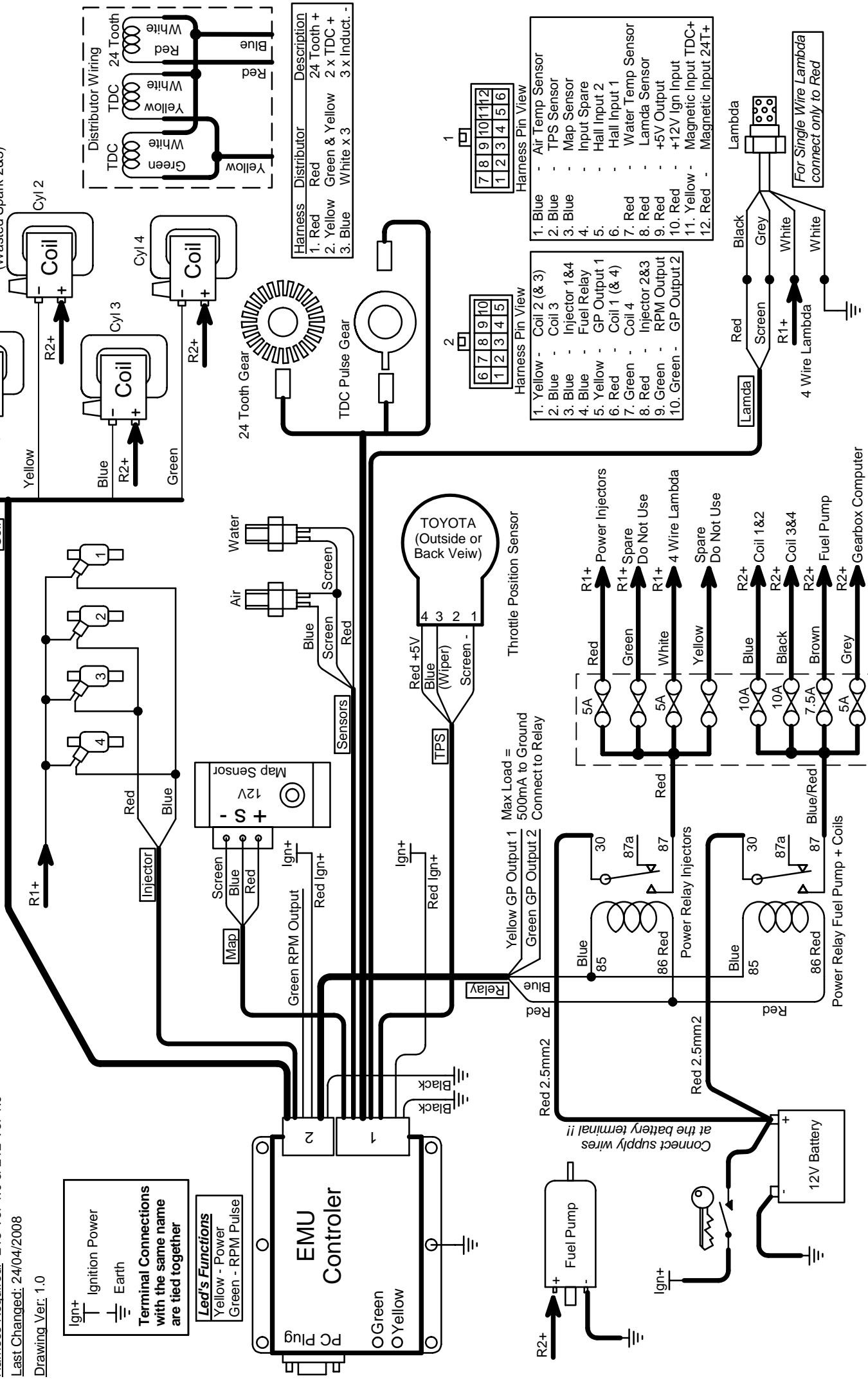
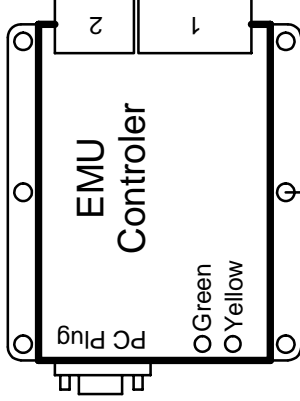
Last Changed: 24/04/2008

Drawing Ver: 1.0

Ign+ Ignition Power
Earth

Terminal Connections with the same name are tied together

Led's Functions
Yellow - Power
Green - RPM Pulse



Harness	Distributor	Description
1. Red	Red	24 Tooth +
2. Yellow	Green & Yellow	2 x TDC +
3. Blue	White x 3	3 x Induct. -

Harness Pin View	
6	7
8	9
10	11
12	1
3	4
5	2

Harness Pin View	
7	8
9	10
11	12
1	2
3	4
5	6

- 1. Yellow - Coil 2 (& 3)
- 2. Blue - Coil 3
- 3. Blue - Injector 1&4
- 4. Blue - Fuel Relay
- 5. Yellow - GP Output 1
- 6. Red - Coil 1 (& 4)
- 7. Green - Coil 4
- 8. Red - Injector 2&3
- 9. Green - RPM Output
- 10. Green - GP Output 2

- 1. Blue - Air Temp Sensor
- 2. Blue - TPS Sensor
- 3. Blue - Map Sensor
- 4. - Input Spare
- 5. - Hall Input 2
- 6. - Hall Input 1
- 7. Red - Water Temp Sensor
- 8. Red - Lambda Sensor
- 9. Red - +5V Output
- 10. Red - +12V Ign Input
- 11. Yellow - Magnetic Input TDC+
- 12. Red - Magnetic Input TDC+

