

# 1Trig 6Cyl 3Coil 5V Mag

Harness Required: E01 Ver 1.1 & E09 Ver 1.0

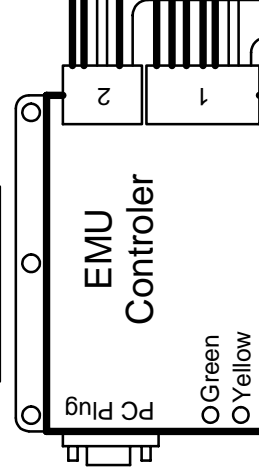
Last Changed: 23/06/2008

Drawing Ver: 1.0

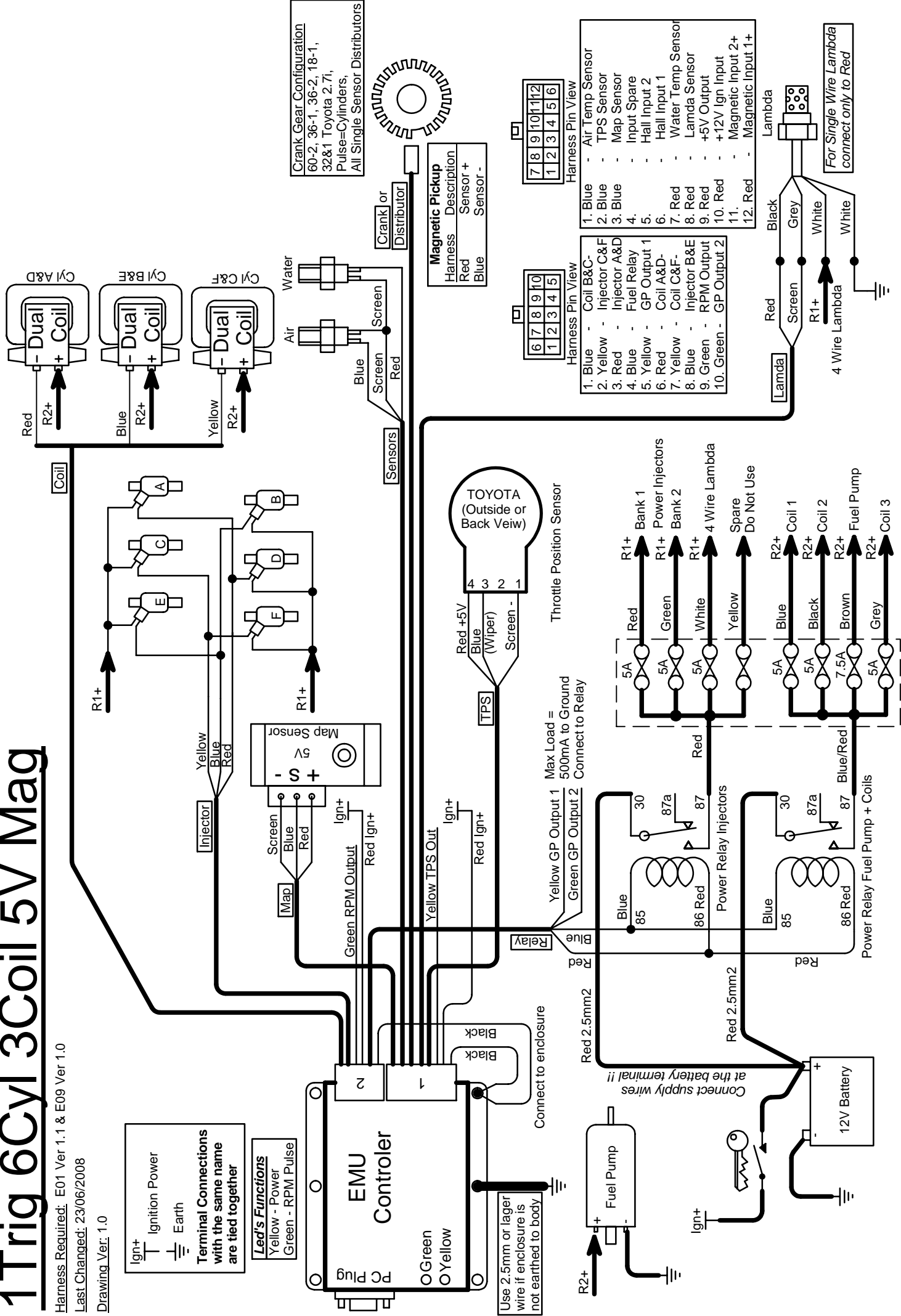
Ign+ Ignition Power  
Earth

**Terminal Connections with the same name are tied together**

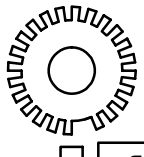
**Led's Functions**  
Yellow - Power  
Green - RPM Pulse



Use 2.5mm or larger wire if enclosure is not earthed to body



**Crank Gear Configuration**  
60-2, 36-1, 36-2, 18-1,  
32&1 Toyota 2.7i,  
Pulse=Cylinders,  
All Single Sensor Distributors



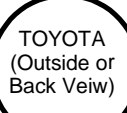
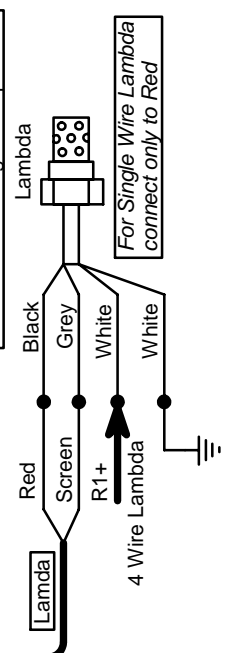
Harness	Magnetic Pickup Description
Red	Sensor +
Blue	Sensor -

Harness Pin View	
6	7
8	9
10	11
12	13
4	5

1. Blue	-	Coil B&C-
2. Yellow	-	Injector C&F
3. Red	-	Injector A&D
4. Blue	-	Fuel Relay
5. Yellow	-	GP Output 1
6. Red	-	Coil A&D-
7. Yellow	-	Coil C&F-
8. Blue	-	Injector B&E
9. Green	-	RPM Output
10. Green	-	GP Output 2

Harness Pin View	
7	8
9	10
11	12
1	2
3	4
5	6

1. Blue	-	Air Temp Sensor
2. Blue	-	TPS Sensor
3. Blue	-	Map Sensor
4.	-	Input Spare
5.	-	Hall Input 2
6.	-	Hall Input 1
7. Red	-	Water Temp Sensor
8. Red	-	Lambda Sensor
9. Red	-	+5V Output
10. Red	-	+12V Ign Input
11.	-	Magnetic Input 2+
12. Red	-	Magnetic Input 1+



Max Load = 500mA to Ground  
Connect to Relay

