

# Rotary 2Rotor 4Coil 5V Mag

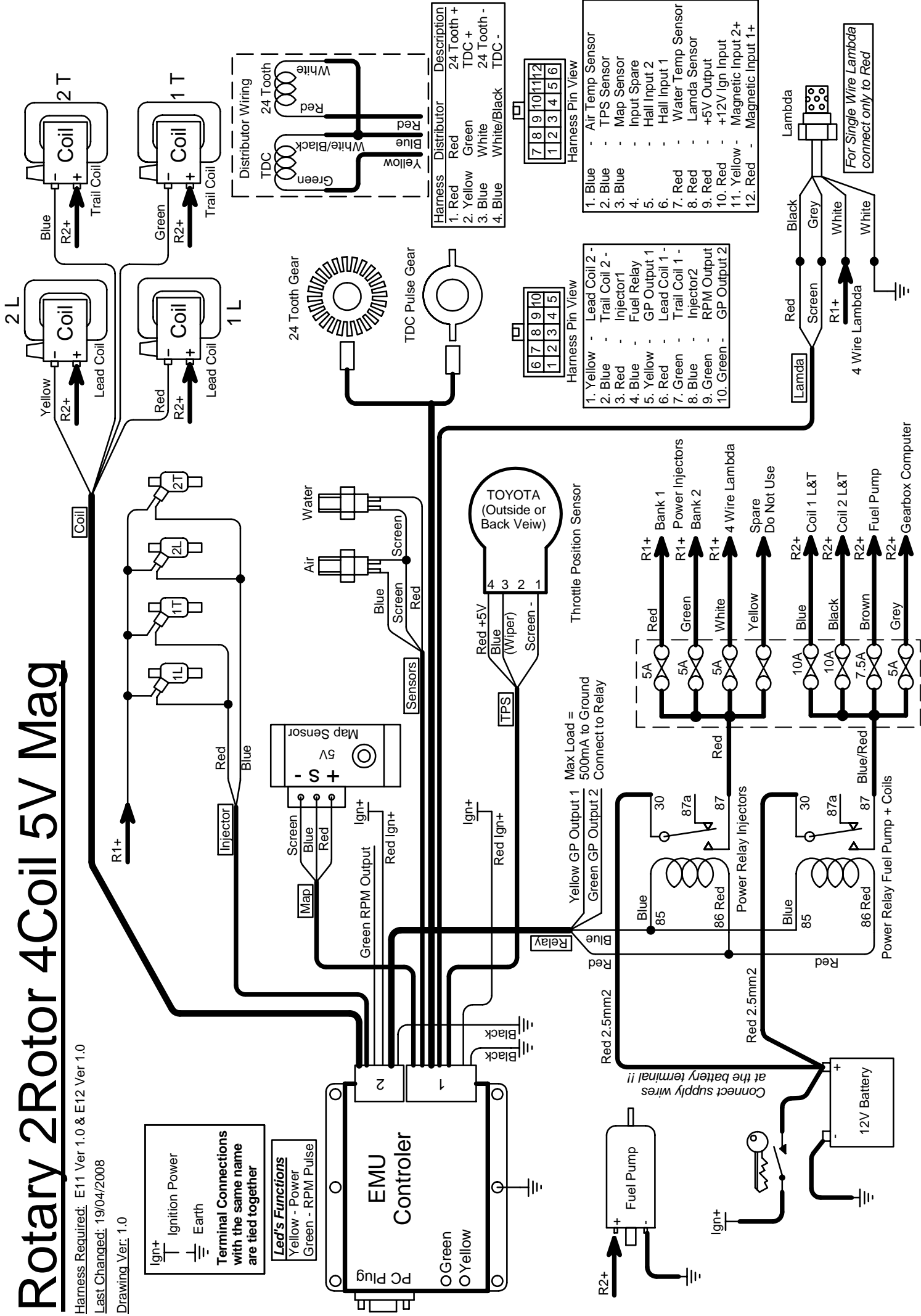
Harness Required: E11 Ver 1.0 & E12 Ver 1.0

Last Changed: 19/04/2008

Drawing Ver: 1.0

Ign+ Ignition Power  
 Earth  
**Terminal Connections with the same name are tied together**

**Led's Functions**  
 Yellow - Power  
 Green - RPM Pulse

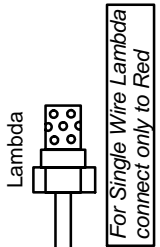


Harness	Distributor	Description
1. Red	Red	24 Tooth +
2. Yellow	Green	TDC +
3. Blue	White	24 Tooth -
4. Blue	White/Black	TDC -

Harness Pin View	
7	8
9	10
1	2
3	4
5	6

1. Yellow - Lead Coil 2 -
2. Blue - Trail Coil 2 -
3. Red - Injector 1
4. Blue - Fuel Relay
5. Yellow - GP Output 1
6. Red - GP Output 1 -
7. Green - Lead Coil 1 -
8. Blue - Trail Coil 1 -
9. Green - RPM Output
10. Green - GP Output 2

1. Blue - Air Temp Sensor
2. Blue - TPS Sensor
3. Blue - Map Sensor
4. - Input Spare
5. - Hall Input 2
6. - Hall Input 1
7. Red - Water Temp Sensor
8. Red - Lambda Sensor
9. Red - +5V Output
10. Red - +12V Ign Input
11. Yellow - Magnetic Input 2+
12. Red - Magnetic Input 1+



For Single Wire Lambda connect only to Red

TOYOTA (Outside or Back View)

Max Load = 500mA to Ground  
 Connect to Relay

