

Toyota 4Cyl 5V Mag

Harness Required: E11 Ver 1.0 & E12 Ver 1.0

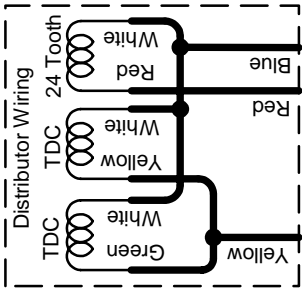
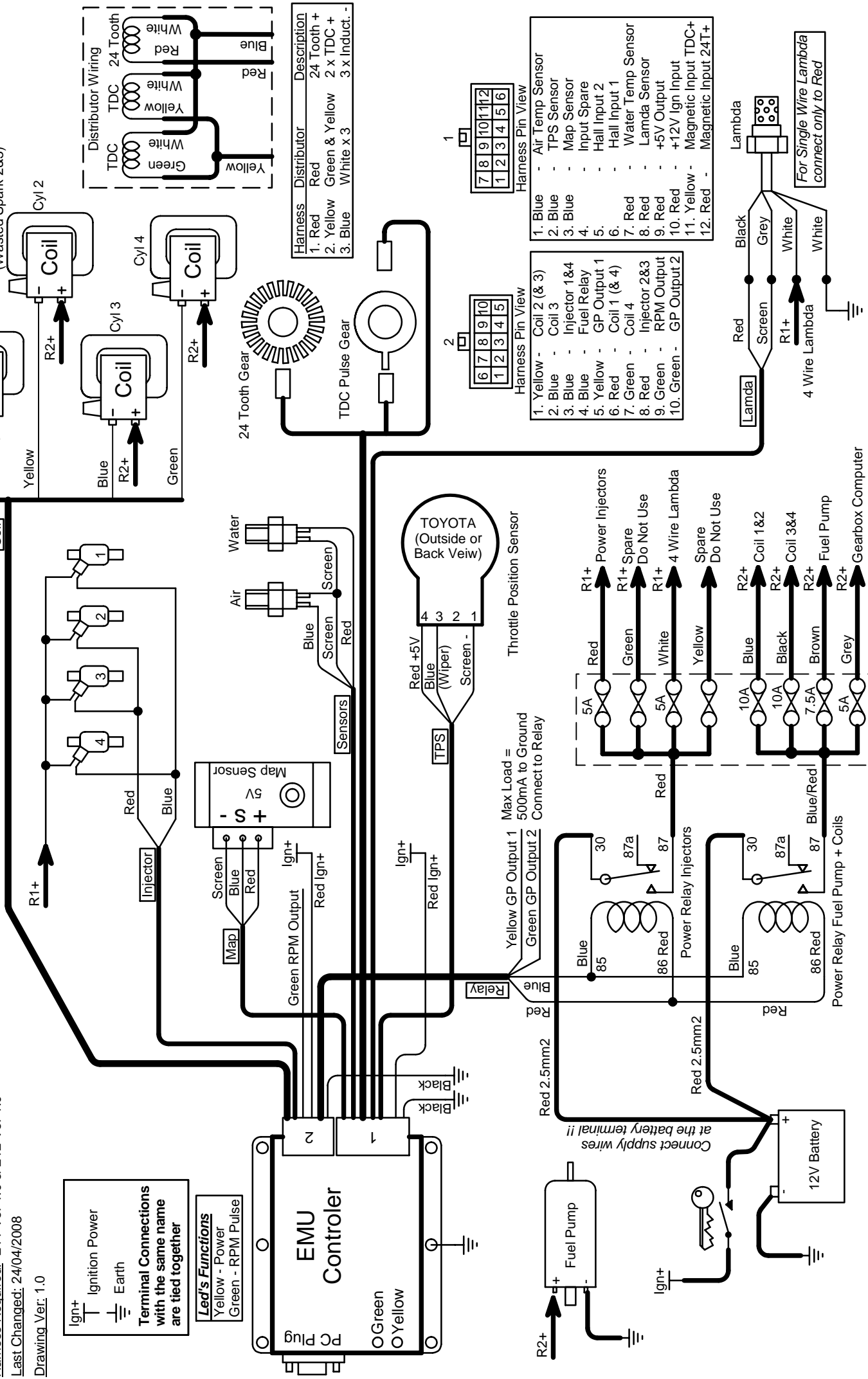
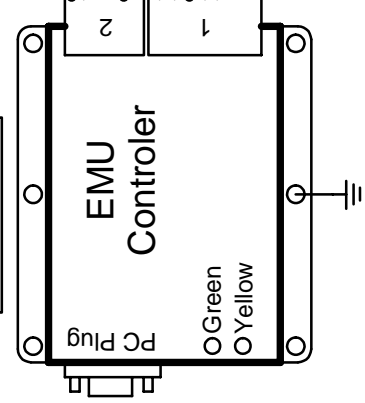
Last Changed: 24/04/2008

Drawing Ver: 1.0

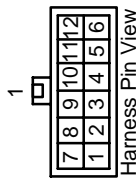
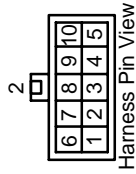
Ign+ Ignition Power
Earth

Terminal Connections with the same name are tied together

Led's Functions
Yellow - Power
Green - RPM Pulse

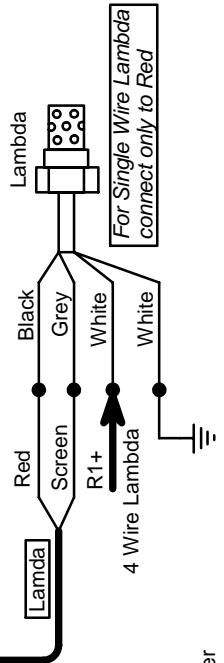
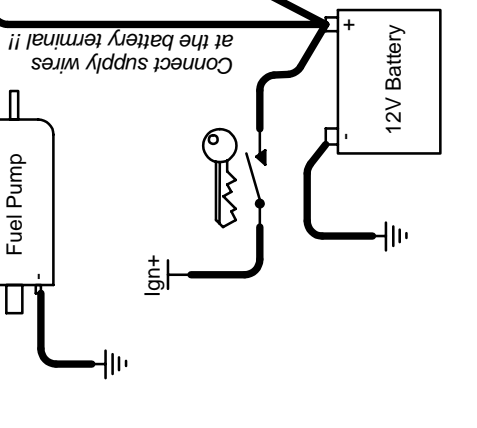
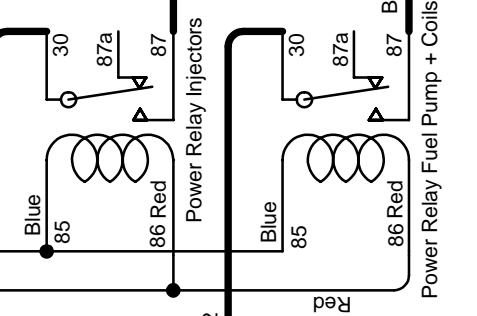
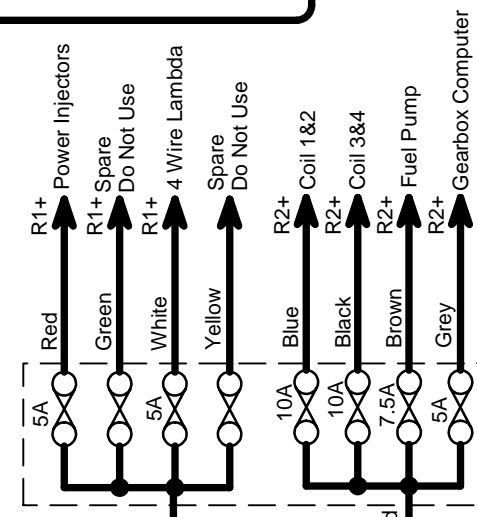


Harness	Distributor	Description
1. Red	Red	24 Tooth +
2. Yellow	Green & Yellow	2 x TDC +
3. Blue	White x 3	3 x Includ. -



- | Pin | Color | Description |
|-----|--------|---------------------|
| 1. | Blue | Air Temp Sensor |
| 2. | Blue | TPS Sensor |
| 3. | Blue | Map Sensor |
| 4. | Blue | Input Spare |
| 5. | Yellow | Hall Input 2 |
| 6. | Red | Hall Input 1 |
| 7. | Red | Water Temp Sensor |
| 8. | Red | Lambda Sensor |
| 9. | Red | +5V Output |
| 10. | Red | +12V Ign Input |
| 11. | Yellow | Magnetic Input TDC+ |
| 12. | Red | Magnetic Input TDC+ |

- | Pin | Color | Description |
|-----|--------|--------------|
| 1. | Yellow | Coil 2 (& 3) |
| 2. | Blue | Coil 3 |
| 3. | Blue | Injector 1&4 |
| 4. | Blue | Fuel Relay |
| 5. | Yellow | GP Output 1 |
| 6. | Red | Coil 1 (& 4) |
| 7. | Green | Coil 4 |
| 8. | Red | Injector 2&3 |
| 9. | Green | RPM Output |
| 10. | Green | GP Output 2 |



For Single Wire Lambda connect only to Red