

1Trig 6Cyl 3Coil 12V Mag

Harness Required: E14 Ver 1.0 & E09 Ver 1.0

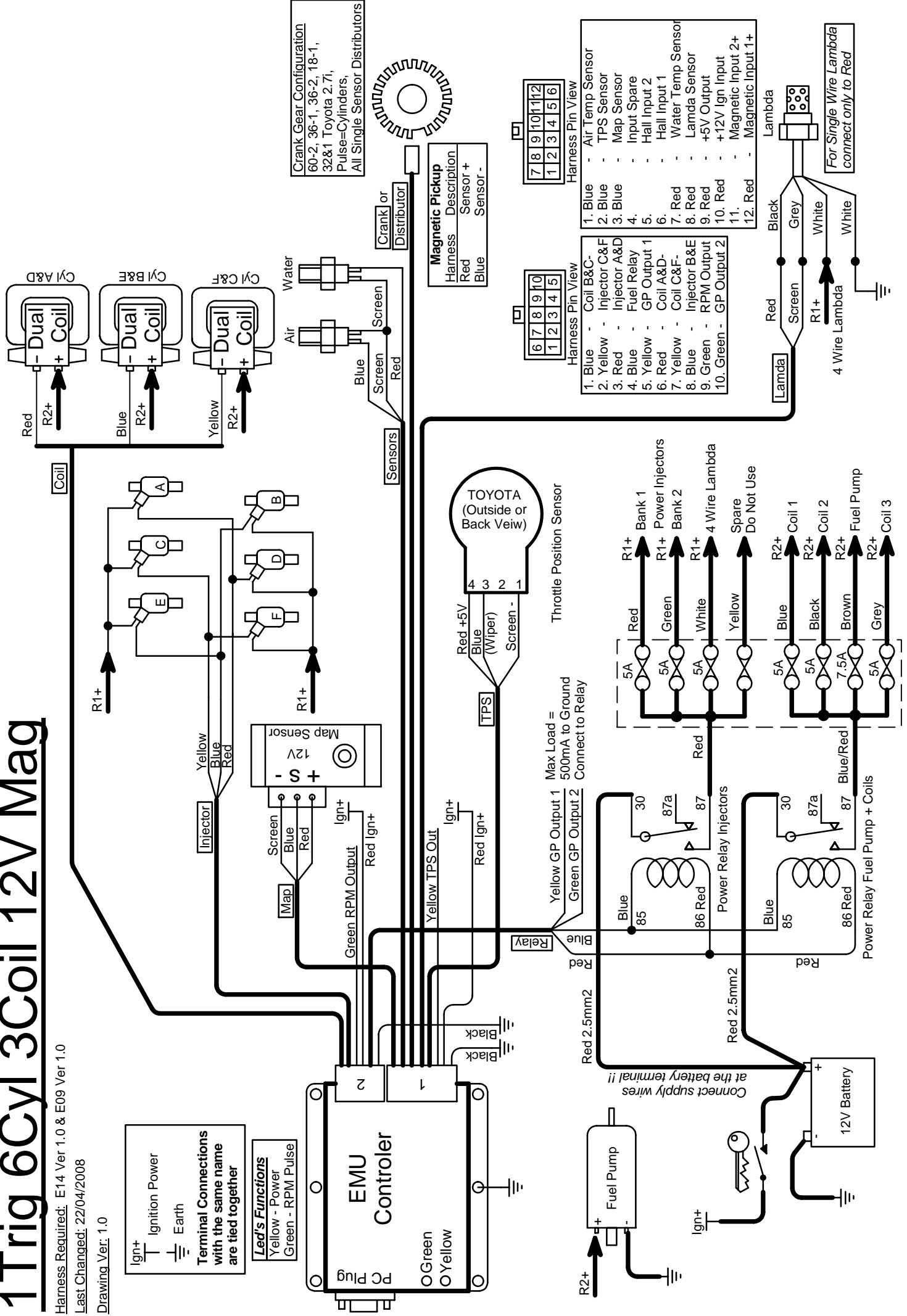
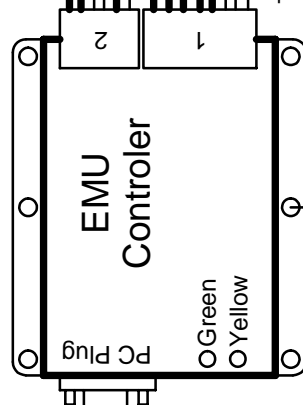
Last Changed: 22/04/2008

Drawing Ver: 1.0

Ign+ Ignition Power
Earth

Terminal Connections with the same name are tied together

Led's Functions
Yellow - Power
Green - RPM Pulse



Crank Gear Configuration
60-2, 36-1, 36-2, 18-1,
32&1 Toyota 2.7i,
Pulse=Cylinders,
All Single Sensor Distributors

Harness	Description
Red	Sensor +
Blue	Sensor -

Harness Pin View

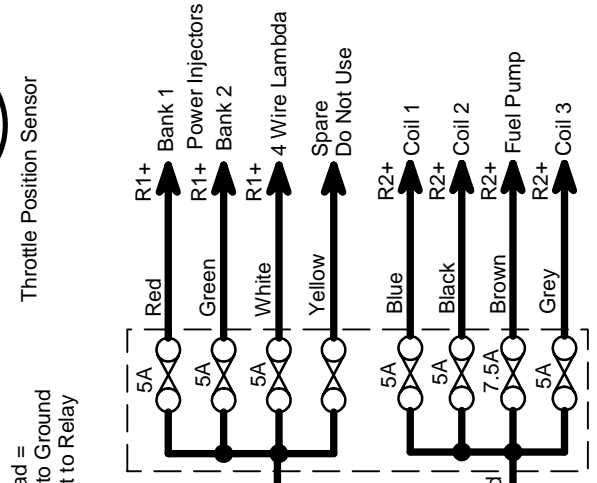
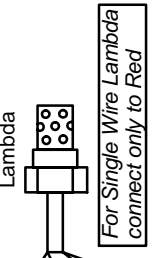
6	7	8	9	10
1	2	3	4	5

1. Blue	-	Coil B&C-
2. Yellow	-	Injector C&F
3. Red	-	Injector A&D
4. Blue	-	Fuel Relay
5. Yellow	-	GP Output 1
6. Red	-	Coil A&D-
7. Yellow	-	Coil C&F-
8. Blue	-	Injector B&E
9. Green	-	RPM Output
10. Green	-	GP Output 2

Harness Pin View

7	8	9	10	11	12
1	2	3	4	5	6

1. Blue	-	Air Temp Sensor
2. Blue	-	TPS Sensor
3. Blue	-	Map Sensor
4.	-	Input Spare
5.	-	Hall Input 2
6.	-	Hall Input 1
7. Red	-	Water Temp Sensor
8. Red	-	Lambda Sensor
9. Red	-	+5V Output
10. Red	-	+12V Ign Input
11.	-	Magnetic Input 2+
12. Red	-	Magnetic Input 1+



Max Load = 500mA to Ground
Connect to Relay

