



**SPITRONICS™**  
ENGINE MANAGEMENT SYSTEMS

## Spitronics Hyperspace Software & Firmware

Thank you for using our products. Below are a few items that will help you getting started quickly.






### **Unzip**

Some files are compressed. Below is a link to download the unzip program if you don't have one installed. It is freeware.

<http://www.7-zip.org/download.html>

### **File save folder**

Create a Spitronics folder to download the Hyperspace software. If you installed Galaxy before there will be a Spitronics folder created in the C drive root.

This PC > Local Disk (C:)  Spitronics  Hyperspace  Device Manager  
 ECU  
 TCU

Unzip the files and put them in the right folders. You may put all the different versions for ECU in the same folder. This way Hyperspace will know where your files are and if you opened the wrong version, Hyperspace will tell you and open the correct version for that firmware. Always make sure you have the latest versions that will include new features and bug fixes.

After unzip make a shortcut of the exe file onto your desktop for easy access. When you run the file for the first time, Hyperspace will create folders and a Config file to keep device and auto saved files. There will also be a log file should there be software glitches. The manual will also be unpacked and saved there. When you download a new version you may unzip it over the old files and your saved folders will remain intact. Keep your old Config file so that custom hot-key setups will remain unchanged when you load the new update. If the name differs from the old file, you may have to rename your Config file to the same name as the new EXE file. Keep the extension as it is.

### **Manual**

The manual is embedded in the software. If you download the software, it will be unpacked in the Hyperspace folder. It can also be downloaded from the usual **Manuals** folder under **Downloads** from our website.

<https://support.spitronics.com/downloads/#download-filesManuals>

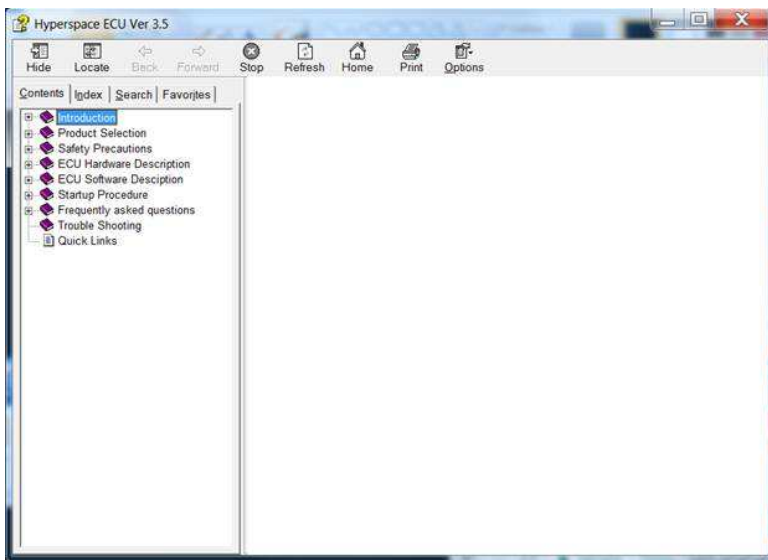
## Manual Problems with HTML

The manuals are written in HTML files. This cause anti-virus programs to suspect the data and sometimes block the content. Here are the problems that arise and how to get past them.

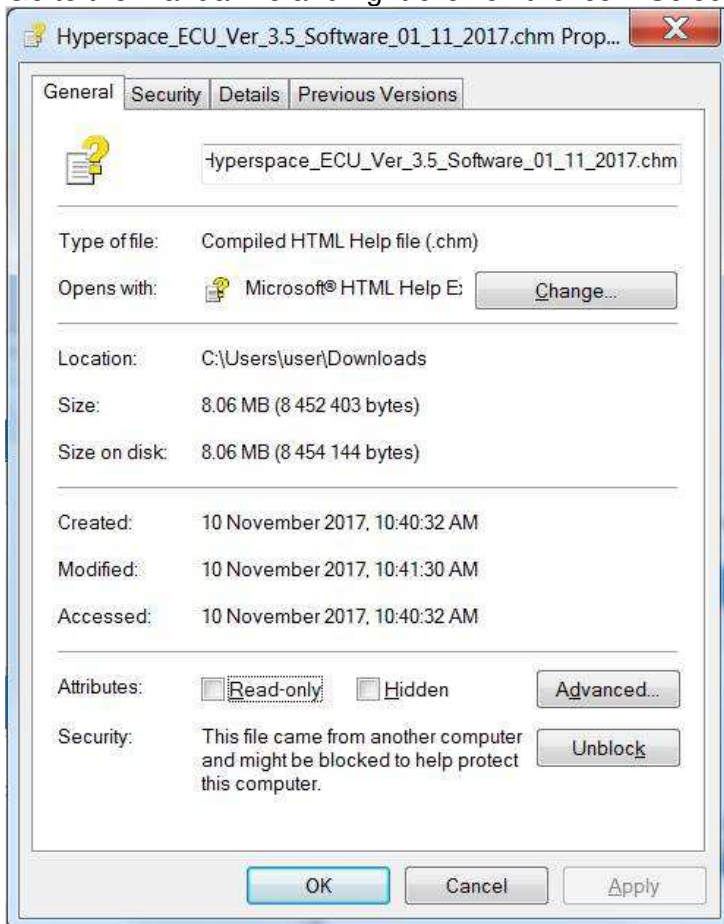
When downloading you may encounter this message. Select Keep.



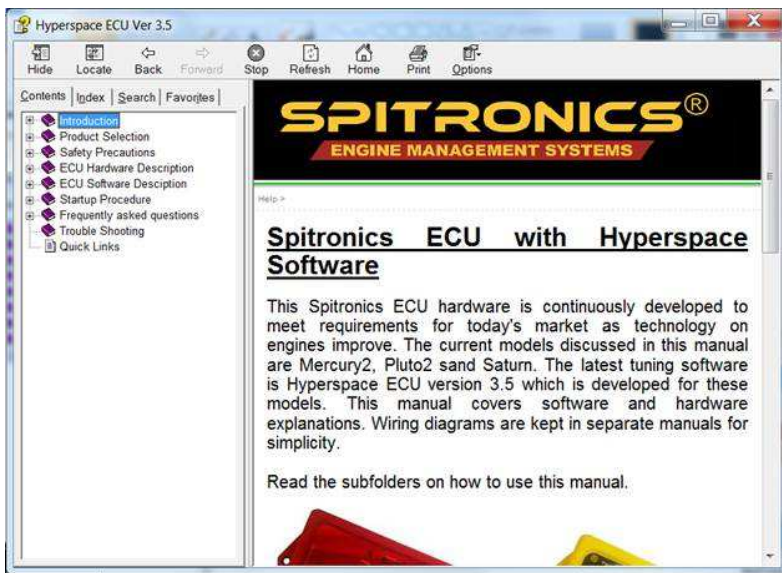
When you open a manual you may find the list but no data.



Go to the manual file and right click on the icon. Select properties. Select Unblock and Apply.



Open the manual file again and now the content will show.



## Software Install Problems

If you install on an old laptop it may require an older version of Dot.net V4.0. Below is a link where to download. Note that it takes a while to install so be patient.

<https://www.microsoft.com/en-US/Download/confirmation.aspx?id=17718>

## ECU Version compatibility between Ver 3.5, Ver 3.5A, Ver 3.5E and Ver 3.6A onwards.

Both Galaxy and Hyperspace will be able to read versions 3.5 and tune them. But we made some changes and improvements in the firmware to improve the product. Only Ver 3.5 is covered in Galaxy as this software was discontinued. Do not use it for later firmware versions. Hyperspace took Over from Galaxy with Ver 3.5A and a few firmware changes were made to improve features. Ver 3.5E brought a new code structure that improved internet activation features. This required the Mercury2 to be upgraded if it was sold with older versions. Orion and Orion2 were developed under the new structures. If you use tuning Maps from older firmware then you may need to redo the setup and do some tuning alterations. For further information see the version change document in the manuals.

## TCU Version compatibility between Ver 3.3, Ver 3.3B, Ver 3.3D and Ver 3.6A onwards.

Both Galaxy and Hyperspace will be able to read versions 3.3 and tune them. But we made some changes and improvements in the firmware to improve the product. Only Ver 3.3 is covered in Galaxy as this software was discontinued. Do not use it for later firmware versions. Hyperspace took Over from Galaxy with Ver 3.3B and a few firmware changes were made to improve features. Ver 3.3D brought a new code structure that improved internet activation features. This required the Mercury2 to be upgraded if it was sold with older versions. Orion and Orion2 were developed under the new structures. If you use tuning Maps from older firmware then you may need to redo the setup and do some tuning alterations. For further information see the version change document in the manuals.

## Notice

Thank you for your patience and contribution with our Software and Firmware as they are constantly developed and bettered. Should you find any software glitches that require fixing, please email us on [info@spitronics.com](mailto:info@spitronics.com) with a short explanation of your findings or ideas. These changes will be fixed daily and then uploaded to the web. The new manuals is also constantly under construction and any fixes or ideas can also be mailed to [info@spitronics.com](mailto:info@spitronics.com) Your support and dedication is greatly appreciated to the betterment of the product.

Yours Sincerely,  
**The Spitronics Development Team.**